

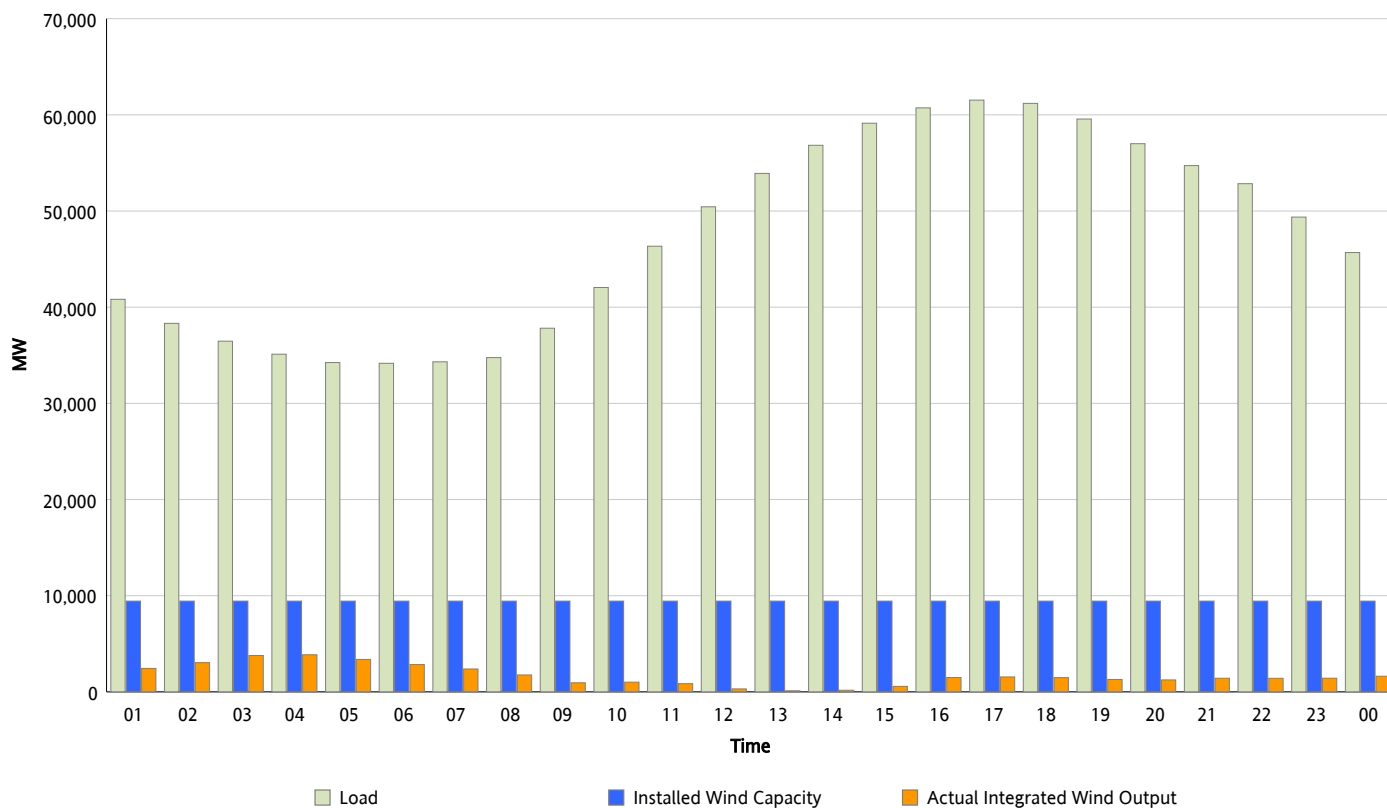


ERCOT Grid Operations

Wind Integration Report : 07/21/2012

Peak Load	61,533 MW
Load Peak Hour (HE)	17
Wind Over Peak	1,549 MW
Wind Record 06/19/12	8,368 MW
Max Wind Value*	4,113 MW
Wind Peak Time	02:59
Wind Integration %	11.5 %

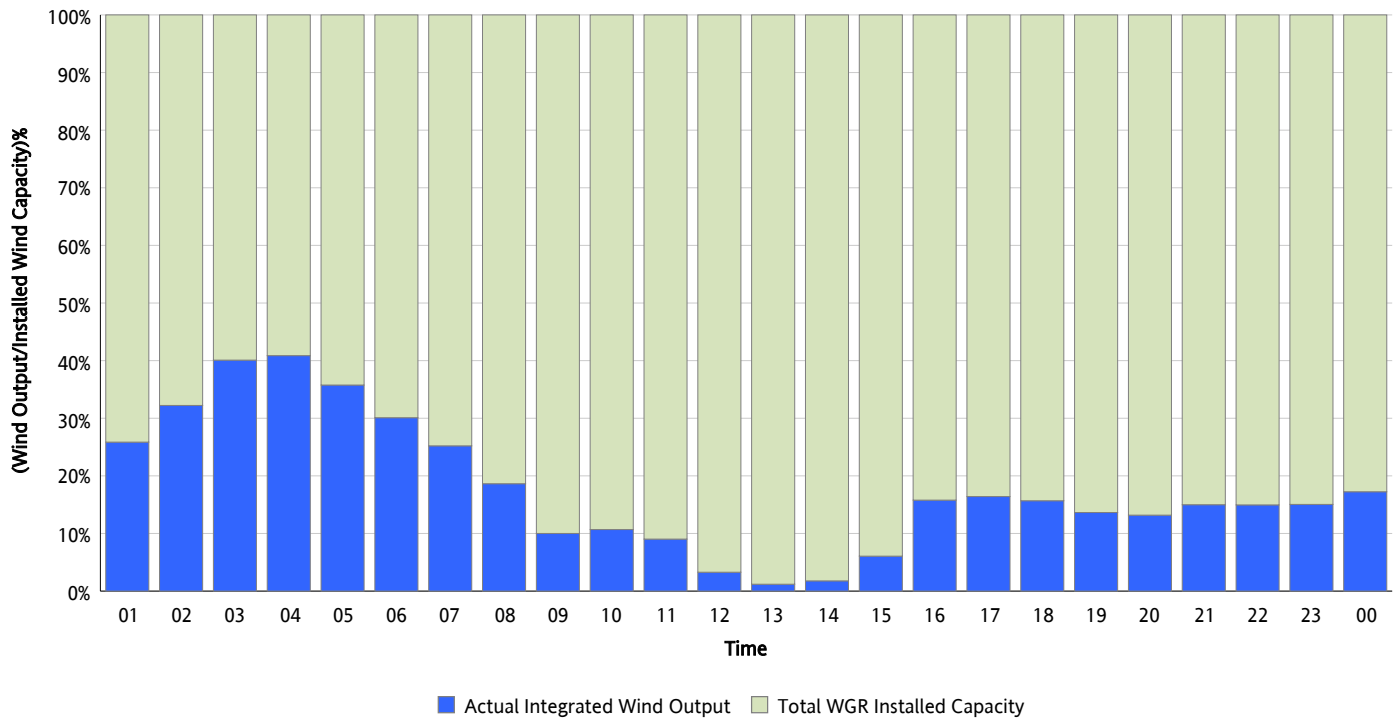
Hourly Average Actual Load vs. Actual Wind Output
07/21/2012



* Wind Record and Wind Max represent instantaneous values and the rest of the values are integrated over the hour

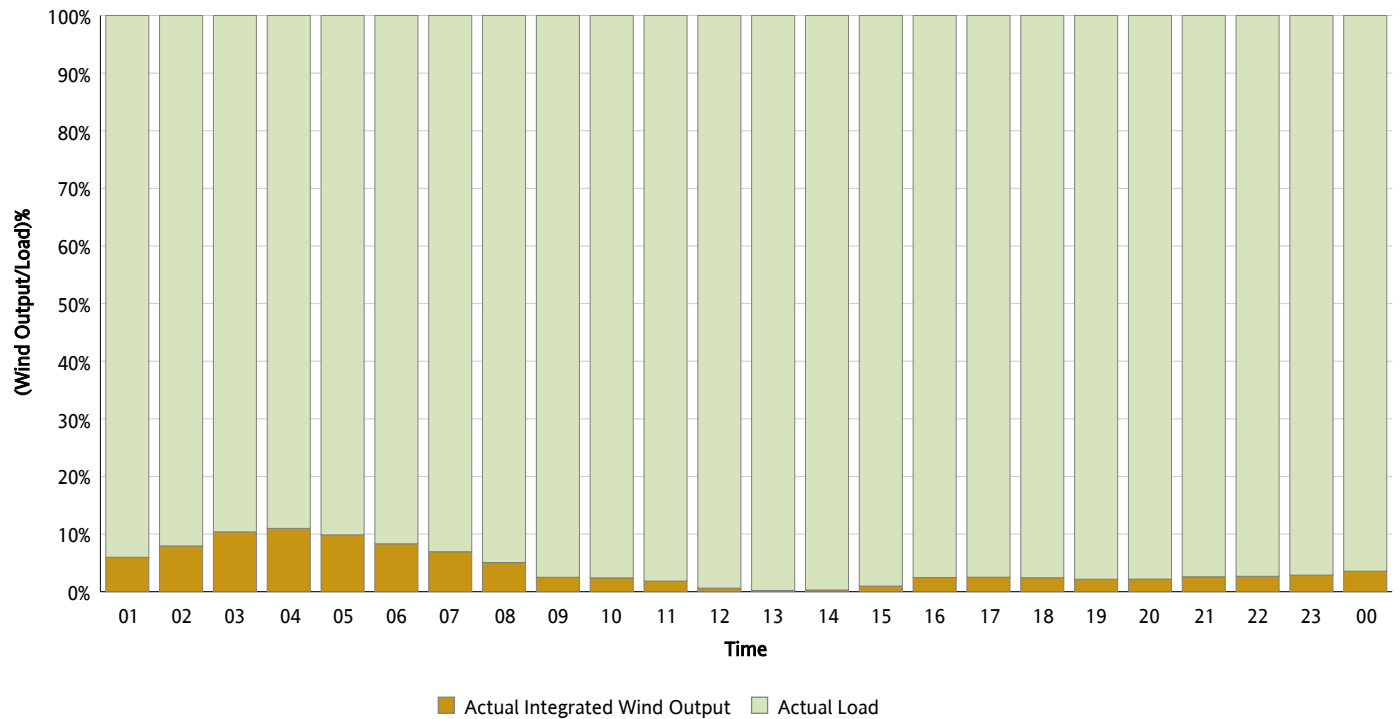
Actual Wind Output as a Percentage of the Total Installed Wind Capacity

07/21/2012



Actual Wind Output as a Percentage of the ERCOT Load

07/21/2012



ERCOT Load vs. Actual Wind Output

07/14/2012 - 07/21/2012

